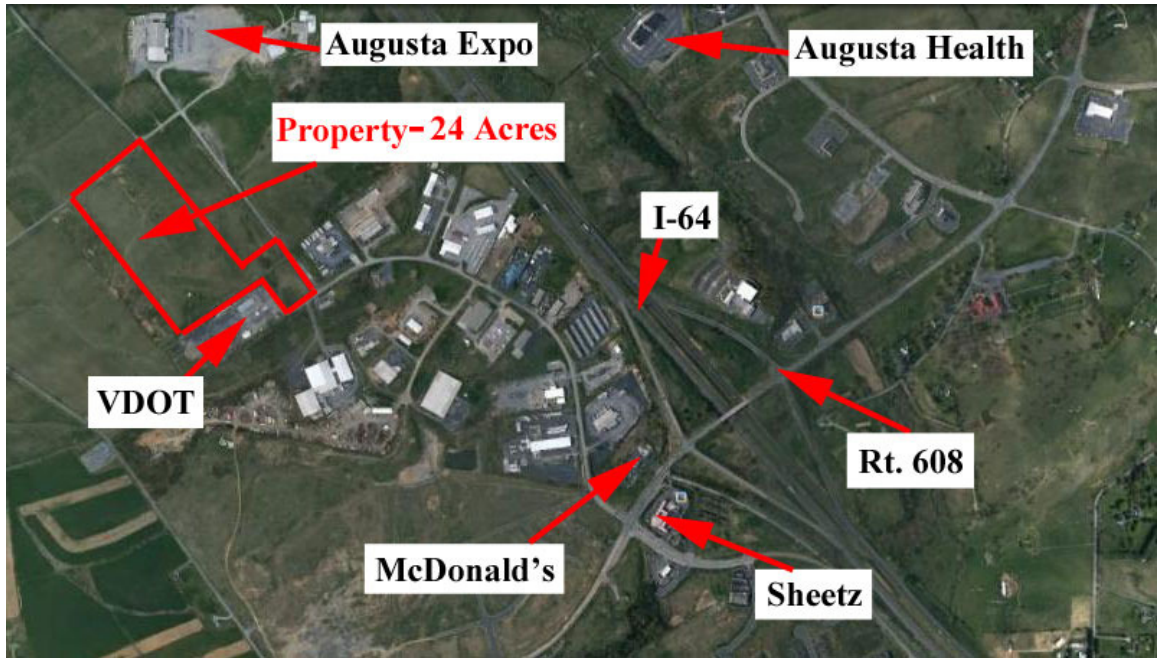


**For Sale: 24 Acre Industrial Parcel
Off I-64
Fishersville, VA**

Triangle
Realtors



- Well located 24 Acre Industrial Parcel Just Off I-64
- Over \$40M of New Interstate Interchange Work
- Close Proximity to Expanding Medical Center and New Medical School
- Near Intersection of I-81 and I-64
- Zoned Gb
- Offered at: \$1,600,000

Demographics

Estimate	3Mi	5Mi	10Mi
Population	8,414	29,117	97,287
Households	3,189	11,410	38,974
Avg HH Income	\$66,512	\$68,578	\$62,462

Peter Wray, Principal Broker
540-849-9020 or 540-885-5181 ext. 11
Triangle Realtors
2903 North Augusta Street Staunton, VA 24401
phwray@triangler Realtors.net
www.triangler Realtors.net