

# Prime Land Adjacent New Starbucks at Walmart/Lowe's Traffic Light

526 Reservoir Road | Woodstock, VA

(540) 849-9020  
www.trianglerealtors.net

## SALE, GROUND LEASE, OR BUILD-TO-SUIT



### PROPERTY HIGHLIGHTS

- 1 to 4 acres available
- Join new Starbucks retail center
- Main traffic light at Walmart and Lowe's
- Great opportunity for: hotel, mini-storage, RV storage, professional office, medical office, retail, day care, etc.

### MORE INFORMATION

Triangle Realtors  
Peter H. Wray, *Principal Broker*

C: (540) 849-9020  
O: (540) 885-5181 ext. 11  
phwray@trianglerealtors.net  
www.trianglerealtors.net

Triangle,  
Realtors

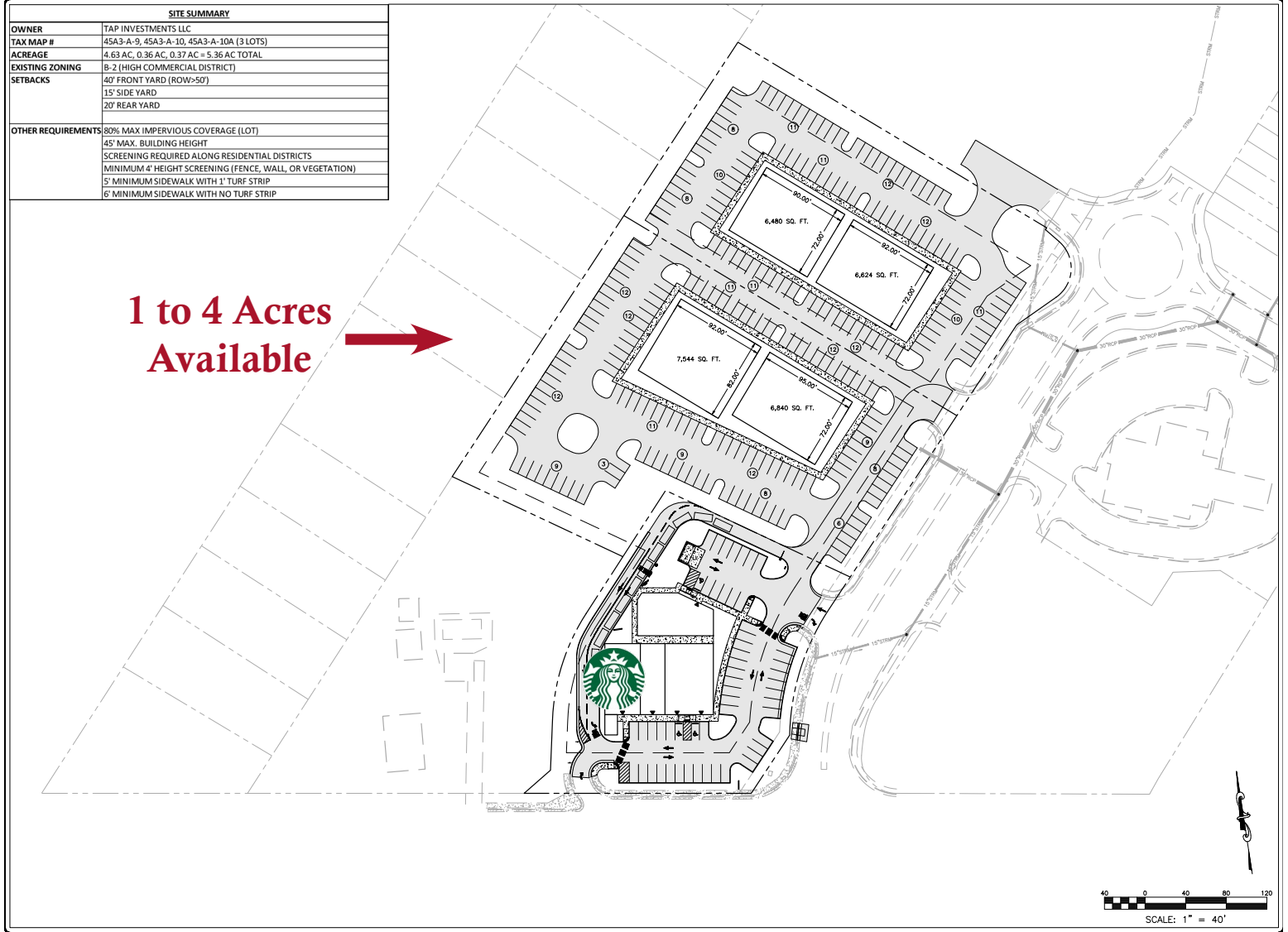
2903 N. Augusta Street | Staunton, VA 24401  
PO Box 4807 | Charlottesville, VA 22905

# Prime Land Adjacent New Starbucks at Walmart/Lowe's Traffic Light

526 Reservoir Road | Woodstock, VA

(540) 849-9020  
www.trianglerealtors.net

## CONCEPT PLAN



### DEMOGRAPHICS

	3 miles	5 miles	10 miles
Population	8,172	13,679	23,128
Households	3,270	5,419	9,169
Avg HH Income	\$69,508	\$72,045	\$73,941

### MORE INFORMATION

Triangle Realtors  
Peter H. Wray, *Principal Broker*

C: (540) 849-9020  
O: (540) 885-5181 ext. 11  
phwray@trianglerealtors.net  
www.trianglerealtors.net

Triangle,  
Realtors

2903 N. Augusta Street | Staunton, VA 24401  
PO Box 4807 | Charlottesville, VA 22905