

Ashland VA: For Sale Prime Site Across From Starbucks

703 England St Ashland, VA 23005

(540) 849-9020
www.trianglerealtors.net

SITE
(Building
Can Stay
or Go)



PROPERTY HIGHLIGHTS

- 2.15 Acres with 5,272 SF Building (can stay or go)
- Serving Interstate 95 - 117,000 VPD
- 26,000 VPD - England Street
- 16,000 VPD - Route 1
- Randolph Macon College - 1,500 students
- Offered at \$1,680,000
- ****Furnishings and Equipment Do Not Convey with Sale but May Be Available for Separate Purchase. Safe Deposit Boxes, Cash Lockers, Safes, and/or Under-Counter Steel Teller Pedestals to be Removed at Seller's Discretion.**

MORE INFORMATION

Triangle,
Realtors

Triangle Realtors
Peter H. Wray, *Principal Broker*

2903 N. Augusta Street
Staunton, VA 24401

PO Box 5017
Charlottesville, VA 22905

C: (540) 849-9020

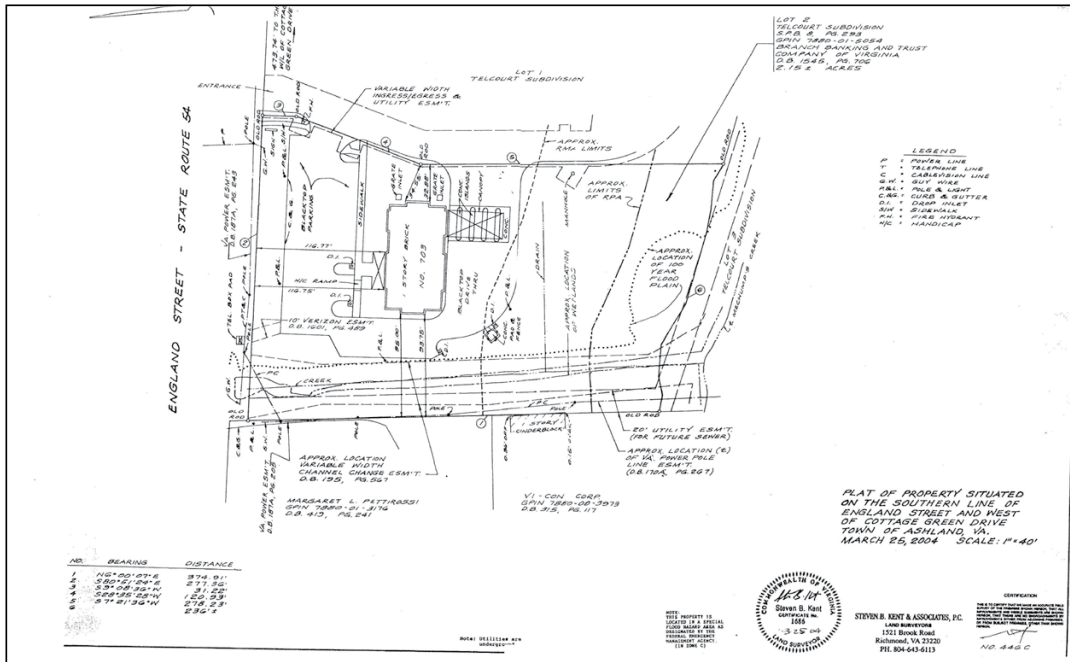
O: (540) 885-5181 ext. 11

phwray@trianglerealtors.net
www.trianglerealtors.net

Ashland VA: For Sale Prime Site Across From Starbucks

703 England St Ashland, VA 23005


(540) 849-9020
www.trianglerealtors.net



DEMOGRAPHICS

	1 mile	3 miles	5 miles
Population	6,580	11,662	20,565
Households	2,444	4,408	7,779
Avg HH Income	\$77,586	\$90,691	\$105,036

MORE INFORMATION



Triangle Realtors
Peter H. Wray, *Principal Broker*

2903 N. Augusta Street
Staunton, VA 24401

PO Box 5017
Charlottesville, VA 22905

C: (540) 849-9020
O: (540) 885-5181 ext. 11
phwray@trianglerealtors.net
www.trianglerealtors.net