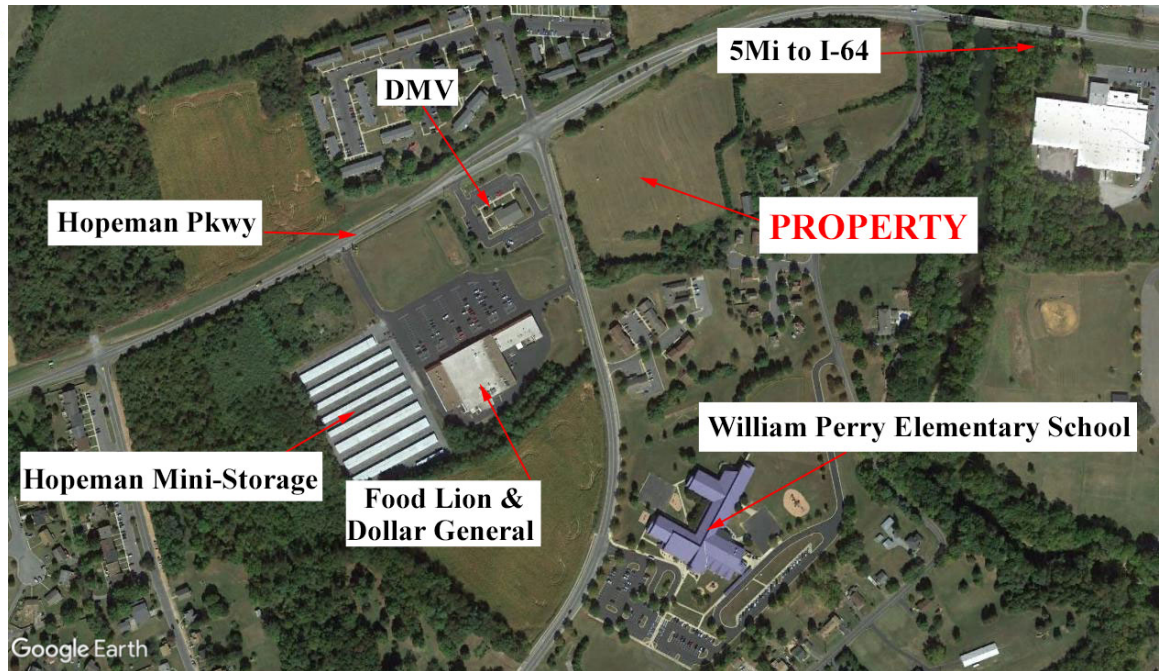


***For Sale: Multi-Family Opportunity by  
School & Shopping Center***

Triangle  
Realtors



***TBD Hopeman Parkway Waynesboro, VA 22980***

- **8.36 Acres**
- **Zoned R-MF (Residential Multi-Family)**
- **Great parcel at intersection of Hopeman Pkwy and King Ave.**
- **Neighbors include Food Lion Shopping Center, William Perry Elementary School, VA DMV, and high density residential**
- **Opportunity for commercial, residential, church, and many others**
- **Offered at \$627,000**

**Peter Wray, Principal Broker**

540-849-9020 or 540-885-5181 ext. 11

**Triangle Realtors**

2903 North Augusta Street Staunton, VA 24401

[phwray@triangler Realtors.net](mailto:phwray@triangler Realtors.net)

[www.triangler Realtors.net](http://www.triangler Realtors.net)