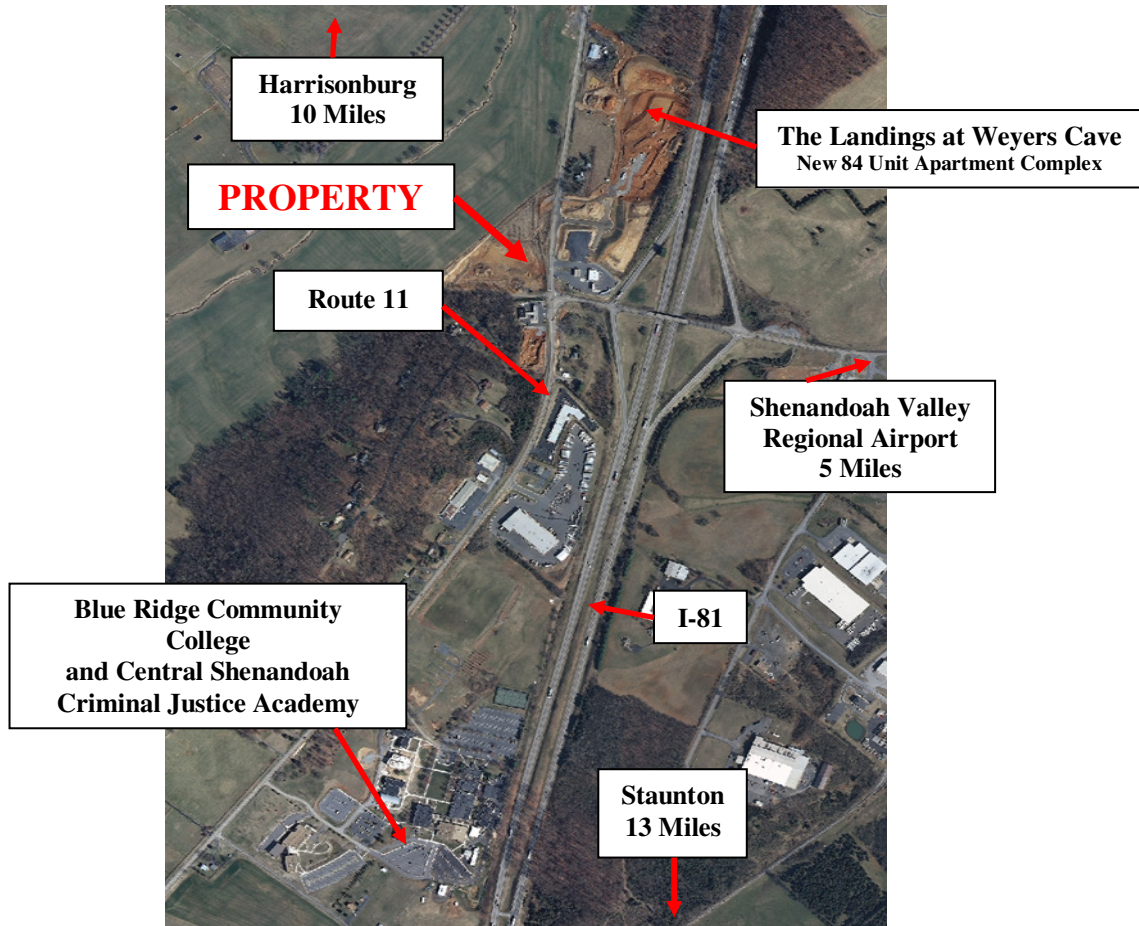


# For Sale:

## Commercial Parcel at Traffic Light

Exit 235 Lee Highway (Route 11),  
Weyers Cave, VA

Triangle  
Realtors



- Best Commercial Parcel in Area
- Site is graded with all compaction engineering completed.
- Off-site storm water management
- Preliminary approval for entrances on Route 11
- Intersection of Route 11 and Route 256
- 7.36 Acres
- Zoned Gb
- **Seller Motivated, Make Offer**
- **Offered at \$2,250,000**
- Blue Ridge Community College Highlights: 2011: Named one of the 10 Greatest Colleges to Work For, Fall 2011: New Technology Center

**Peter Wray, Principal Broker**

540-849-9020 or 540-885-5181 ext. 11

**Triangle Realtors**

2903 North Augusta Street Staunton, VA 24401

[phwray@triangler Realtors.net](mailto:phwray@triangler Realtors.net)

[www.triangler Realtors.net](http://www.triangler Realtors.net)